



AZ Flipper Replacement Instructions

Before you begin:

Elevate your antenna to a straight up position.

Use a bungee cord to hold the LNB Arms against the dish to make it easier to handle.

Rotate the antenna base away from the stow position to move the flipper away from the stop stud.

-Elevating your Antenna-

To elevate your antenna, turn on the controller on by pushing the **RED** power button. Push the **RED** button again to get to **Menu** options. From the **Menu** on your controller: push the **GREEN** button **2** times. This is Option # 3 MOVE ELEVATION. Now push the **RED** power button **1** time. Then **press and hold** the **GREEN** button until the antenna completely raises into full upright position as shown in the picture on the right.



-Rotating Antenna Base-

Using your controller follow these instructions to rotate the antenna base: Turn the controller on by pushing **RED** power button. From the **Menu** page push the **GREEN** button once. This is Option # 2 MOVE AZIMUTH. Now press the **RED** button once, then press the **GREEN** button for **3 seconds**. Now your flipper should be moved away from the stop stud.



1. To remove a **2-piece split Motor Cover**, remove the 7 bolts, the Motor Cover, and continue to Step 6. To remove a **one-piece Motor Cover**, start on the bottom left-hand side of the elevation arm bracket (side opposite of cable harness) and remove the 4 bolts connecting the arm using a 3/16 Allen wrench. Then work up to the bolts above it and remove.



2. After removing the arm bracket, you will expose the elevation shaft cap. *Note-Elevation Shaft cap comes off groove side inward!*



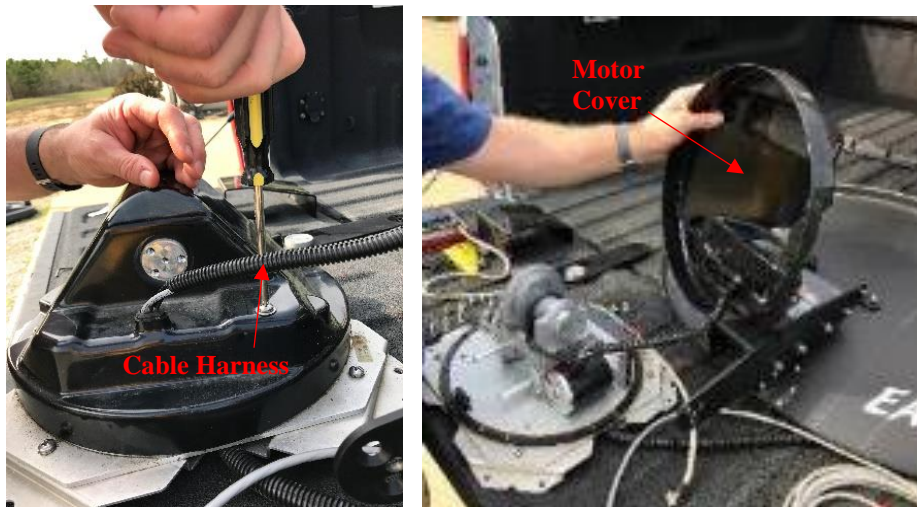
3. Continue to the top of the skew assembly box and remove the 2 Phillip screws to remove the Skew Cover.



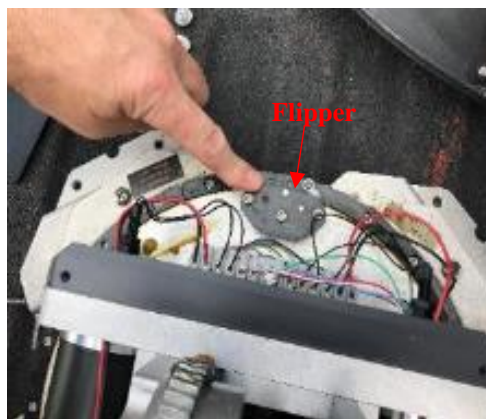
4. Now move to the other arm bracket (cable harness side) and remove all 8 bolts like the previous side, starting with the 4 bolts at the bottom of the arm. You will need to hold the antenna reflector with your left hand to balance the dish.



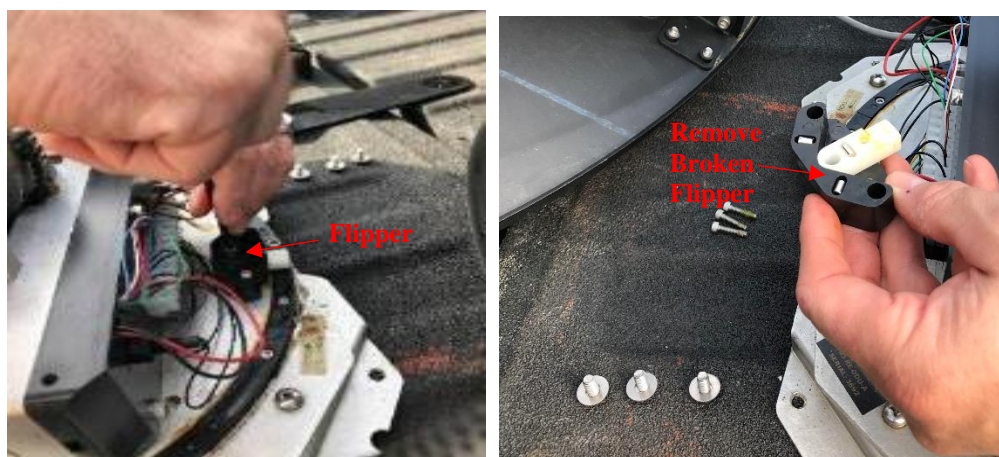
5. Lay the dish reflector down **carefully holding the LNB arms** and unscrew the 3 Phillip screws on the Motor Cover. Pull the cover up to view the assembly, being careful not to pull on the Cable Harness.



6. Now you will see the Flipper.



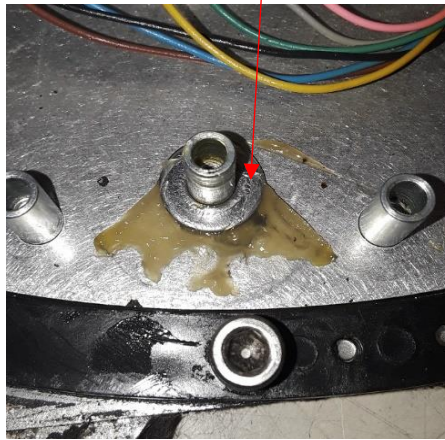
7. Using a 9/64 Allen wrench, remove the 3 bolts in the flipper and remove the broken flipper.



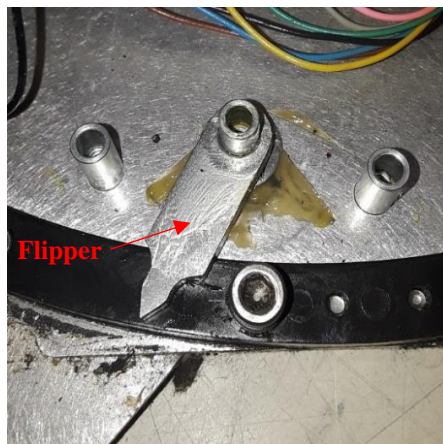
8. You will use replacement parts as listed: (1) Stop Case, (1) SS Flipper, (1) 1/4" Flat washer, (3) 8-32 x 3/4" screws, synthetic grease and (optional) Loctite.



9. Add grease to the 1/4" washer and place washer (grease side down) on the middle standoff post.



10. Place the Flipper on top of the washer.



11. Place the aluminum case on top of the 3 standoffs (smooth side up).



12. Secure with (3) 8-32 x 3/4" screws. **Note: If you have Loctite or silicone rubber you can add it to the end of the screws to ensure it does not come loose.**

13. Now reassemble the unit using backward steps starting at step 5 after reading the Notes below. If you have a two-piece Motor Cover replace it back on top and bolt on using the 7 bolts.

Note: When reassembling the Motor Cover make sure the Cable Harness rubber plug is securely seated.

Note: If installing a new split (two piece) cover you will need to cut the old cover off. Cut from the Cable Harness hole outward to the edge of the cover to remove the old Motor Cover.

Note: Make sure to install the ELEVATION SHAFT CAPS with the groove side in with the single screw prior to installing the ELEVATION ARM Assembly! Also note the Y shape of the ELAVATION SHAFT CAP BOLT pattern and align the ELEVATION ARM with the appropriate mounting holes.

Note: When installing the CABLE SIDE ELEVATION ARM (with the dish reflector and assembly attached) you will need to balance the assembly to get the three bolts to fit tight.

Please contact RF Mogul Tech Support if you have any questions at:

Phone: 801-895-3308

Email: techsupport@rfmogul.com

Website: www.rfmogul.com/submit-a-ticket