

RF Mogul

Firmware Upgrade for MotoSAT D3-D4-J1-H2-H3 Antenna Controllers



Version 14.03

22 April 2015

Upgrade Firmware (HTML)

Please read carefully before proceeding.

Upgrade Firmware

	<h1>SDC-J1</h1>
<p>Standard Functions</p> <ul style="list-style-type: none">• System Status• Modem Status• Product Support <p>Configuration Functions</p> <ul style="list-style-type: none">• Network Settings• Search Settings• RF Settings• Mount Settings• Clock Settings <p>Advanced Functions</p> <ul style="list-style-type: none">• Manual Motor Control• Calibrate Dish• Import<ul style="list-style-type: none">○ Configuration○ Satellite Table• Export<ul style="list-style-type: none">○ Configuration○ Satellite Table• Upgrade Firmware	<p>UPGRADE FIRMWARE</p> <p>The controller has a built-in firmware upgrade utility.</p> <p>Before starting the routine you should make sure that you have your firmware *.hex file ready to upload.</p> <p>When you are ready to begin the upgrade process, click the "Start" button. The controller will run the firmware upgrade utility.</p> <p>Click the "Cancel" button if you do not wish to perform the upgrade at this time.</p> <p><input type="button" value="Start"/></p> <p><input type="button" value="Cancel"/></p>
<p>Copyright © 2014 JamesSoft. All rights reserved. Licensed to RF Mogul LLC.</p>	

WAIT!!!!

Before selecting **START** make sure that you have a (firmware*.hex) file ready for Upload.

When you are ready to begin the upgrade process, click the “**Start**” button. The controller will run the firmware upgrade utility.

Click the “**Cancel**” button if you do not want to perform the firmware upgrade at this time.

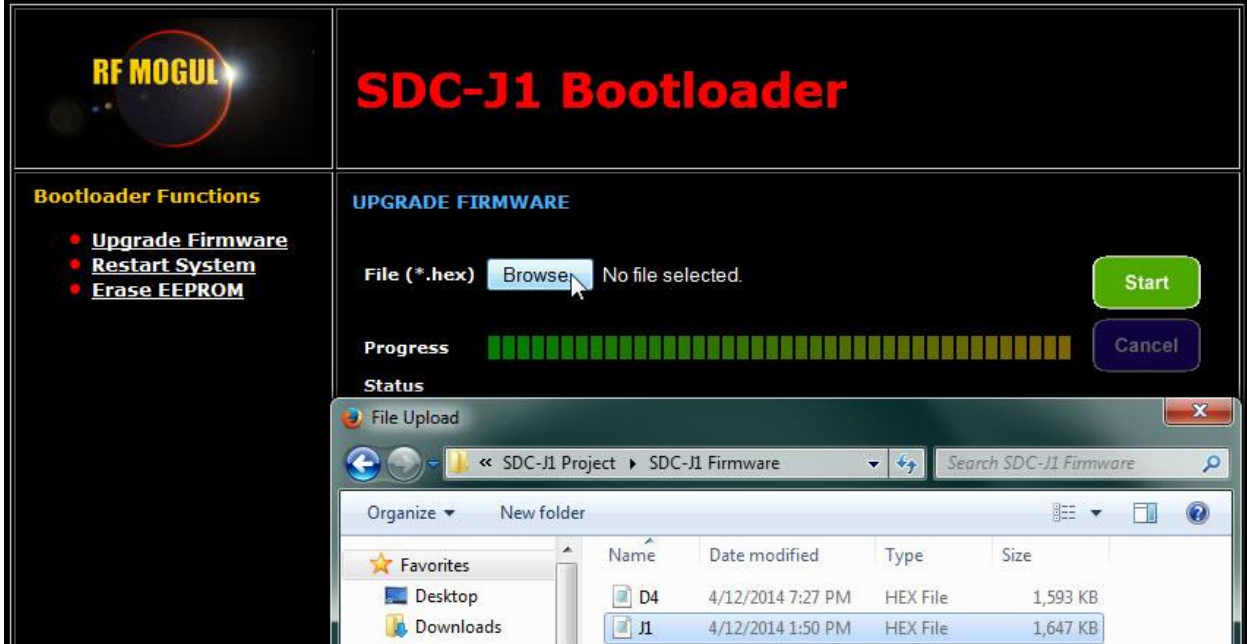
Upgrade Firmware

Start Button selected

Launching SDC Bootloader...

Upgrade Firmware

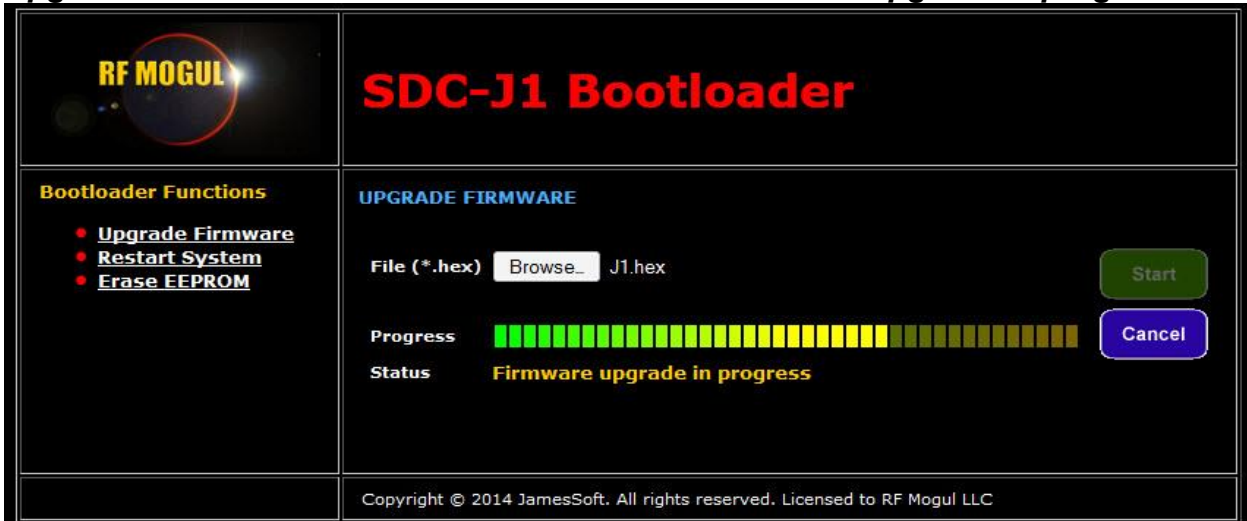
Browse and Open File



Select and open a file. When you are ready to begin the upgrade process, click the “Start” button. The controller will begin to upgrade the firmware.

Upgrade Firmware

upgrade in progress



Once this process has started please do not shut off power or try to cancel.

The system will restart in 30 seconds...

The screenshot displays the SDC-J1 web interface. At the top left is the RF MOGUL logo. The main title is SDC-J1. The interface is divided into several sections:

- Standard Functions:**
 - System Status
 - Modem Status
 - Product Support
- Configuration Functions:**
 - Network Settings
 - Search Settings
 - RF Settings
 - Mount Settings
 - Clock Settings
- Advanced Functions:**
 - Manual Motor Control
 - Calibrate Dish
 - Import
 - Configuration
 - Satellite Table
 - Export
 - Configuration
 - Satellite Table
 - Upgrade Firmware

The main content area shows system status indicators: LNB, LAN, GPS, READY, BUSY, and STOW. A Signal Strength bar is at 80.2. The System Status is 'System initialized'. A dropdown menu shows '114.9W H - SM 5 Inc'. There are 'Search' and 'Stow' buttons, and a red 'STOP' sign. Below are two tables of data:

SENSORS		SATELLITE	
Dish Elevation	115.75 °	Target Satellite	114.9°W H
Dish Azimuth	91.56 °	Target Elevation	116.54 °
Dish RX Skew	3.66 °	Target RX Skew	3.49 °
GPS Longitude	111.90W °	Sat Elevation	42.85 °
GPS Latitude	40.69N °	Sat True Azimuth	184.60 °
Motor Current	0.01 A	Sat Polarization	3.49 °

Copyright © 2014 JamesSoft. All rights reserved. Licensed to RF Mogul LLC.

The Firmware Upgrade will take approximately 10 minutes. The Progress Bar shows the current level of completion.

Firmware Upgrade is complete!

If your browser has not returned to this screen;

- 1> Refresh your Browser Page.
- 2> try Browser IP Address 192.168.1.250
- 3> Press and hold Search and Stow and turn on Power Button.
 - a. after reset try 192.168.1.250

Check Network Settings and Search Settings to see that the system is configured correctly.

Update Satellite Table if necessary.

When you are in the Bootloader you can exit by selecting Restart System.

SDC-J1 Bootloader

Restart System



Then clicking the "Start" button.



A Restart System will bring you back to the Main System Status Page.

SDC-J1 Bootloader

Erase EEPROM



Use the Erase EEPROM when you want to reset the system configuration files to default values. Search Settings, RF Settings, and Mount Settings will be cleared.

The Satellite Table will be deleted. (You must import a Satellite Table after an Erase EEPROM.)

Erase EEPROM will not change or delete any Network Settings.

SDC-J1 Bootloader

EEPROM has been erased



After erasing the EEPROM you can Upgrade Firmware or Restart System.

NOTE: You do not need to Erase EEPROM if you are upgrading Firmware on an existing system.

SDC-J1 Bootloader

Telnet Access



Using Telnet when in Bootloader you will find the Bootloader version.

Default username is admin and default password is password.

If the SDC-J1 controller has frozen or is latched up try holding down the **Search and Stow Buttons** on the Front Panel and then turning on the **Power Button**. This will reset the Controllers MAC and IP Address back to default.

Default local IP Address is 192.168.1.250.

End of Document