

RF Mogul

SATTBL Update for MotoSAT D3-D4-J1-H2-H3 Antenna Controllers



Version 14.03

22 April 2015

Import Satellite Table

Importing Satellite Table Files to the SDC-J1

The SDC-J1 Satellite Antenna Controller is capable of importing and exporting Satellite Tables.

Satellite Tables should be updated occasionally to keep search times shorter. The more outdated a Satellite Table is, the longer the search time will be.

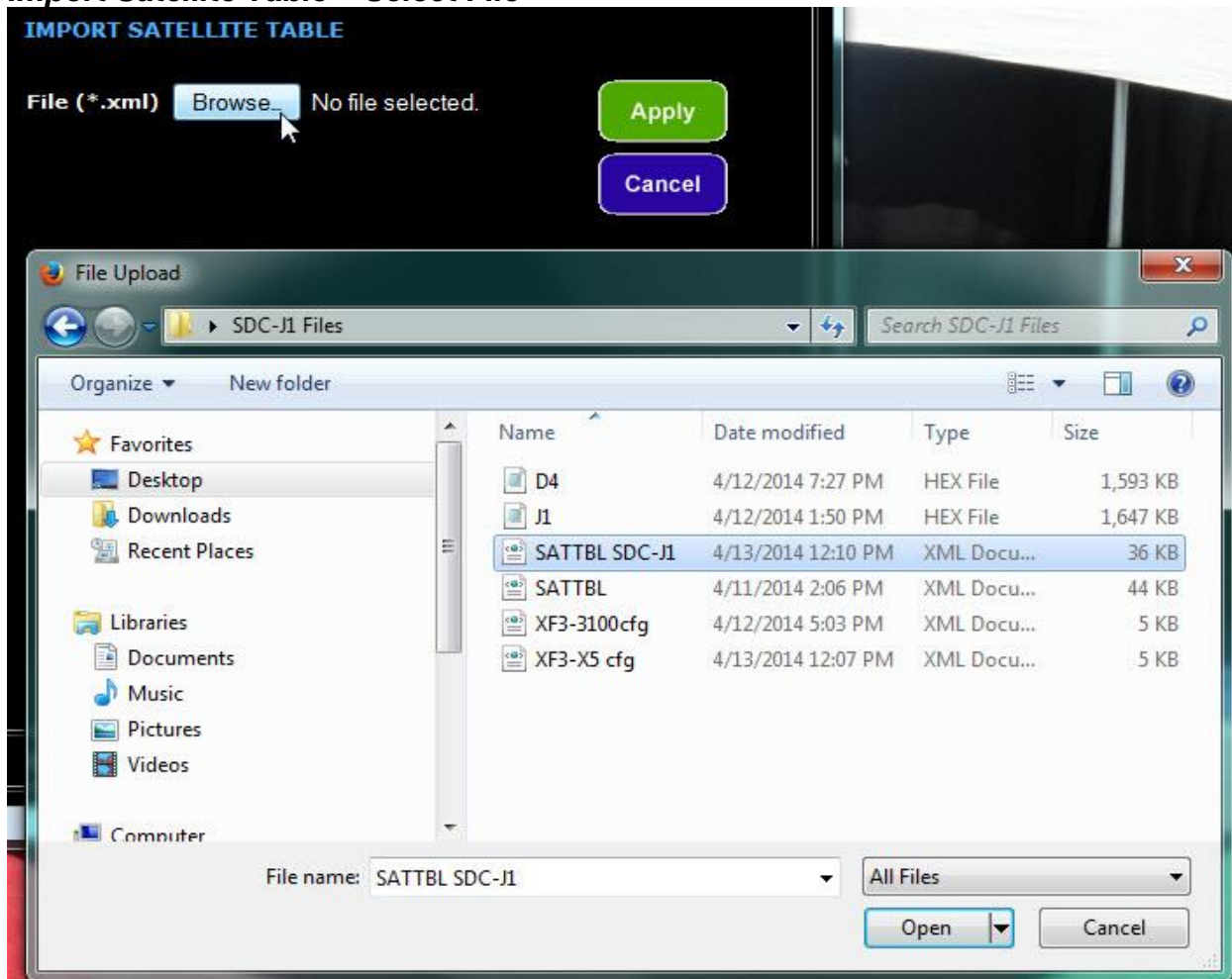
Import Satellite Table



The screenshot displays the SDC-J1 web interface. The top left corner features the 'RF MOGUL' logo. The main header area is titled 'SDC-J1'. On the left side, there is a navigation menu with three sections: 'Standard Functions' (System Status, Modem Status, Product Support), 'Configuration Functions' (Network Settings, Search Settings, RF Settings, Mount Settings, Clock Settings), and 'Advanced Functions' (Manual Motor Control, Calibrate Dish, Import, Export, Upgrade Firmware). The 'Import' option under 'Advanced Functions' is selected. The main content area is titled 'IMPORT SATELLITE TABLE' and contains a file selection interface. It shows 'File (*.xml)' with a 'Browse...' button, followed by the text 'No file selected.'. A blue arrow points to the 'Browse...' button. To the right of the file selection area are two buttons: a green 'Apply' button and a purple 'Cancel' button. At the bottom of the interface, a copyright notice reads: 'Copyright © 2014 JamesSoft. All rights reserved. Licensed to RF Mogul LLC.'

Choose Import> Satellite Table> and then Browse for the Satellite Table file you want to install.

Import Satellite Table – Select File



Satellite Tables can have any filename as long as they have been saved as XML. Choose file and click on Open. Example: Sat Table 14APR2014.xml



Select Apply and wait for the file to transfer (:30 to :45 seconds) and the controller will return to the Main Status Screen.

End of Document.