

ACU-3 Remote Stow

8 OCT 2018



The Remote Stow feature is only available on the ACU-3 Antenna Controller.

This model includes an additional Remote Stow Port located on the back of the Controller.

The Remote Stow feature when installed properly will automatically stow the Antenna when the vehicle ignition (or Dash Switch) is turned on.



LCD Display when Dish is Stowing

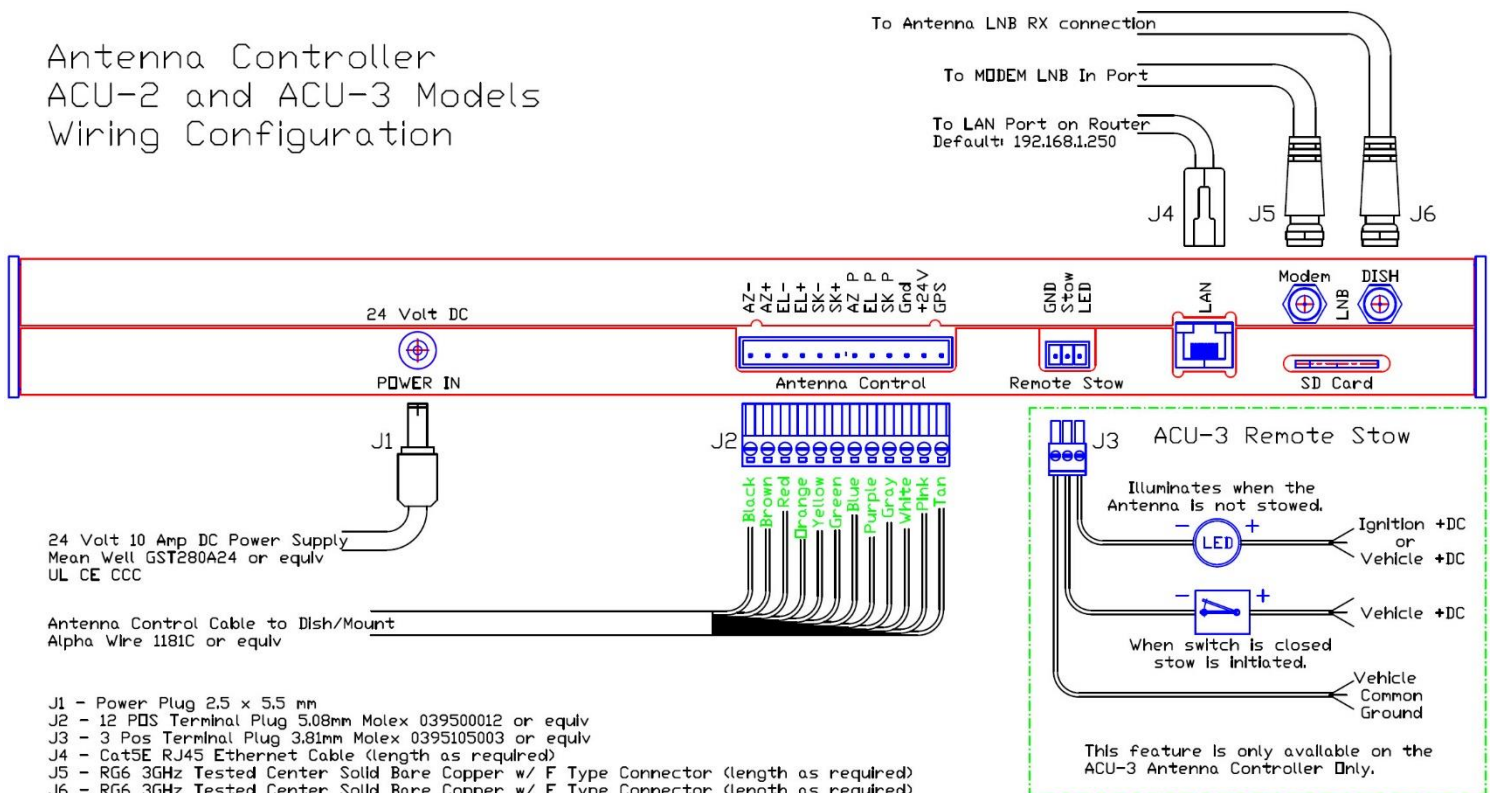


LCD Display when Dish is Stowed

As long as the (Ignition) Switch is Turned on the all front panel controls are disabled. HTML is also Locked out.

Use the Diagram below to wire the J3 Connector to either the Ignition Switch or a Dash Switch and wiring of a Dash LED indicator.

Antenna Controller ACU-2 and ACU-3 Models Wiring Configuration



ACU-3 Remote Stow Minimum Electrical Specifications:

J3 Connector	Molex 0395105003 TERM BLOCK PLUG 3POS STR 3.81MM
J3 Pin 1 (left)	wire to vehicle common ground 22-18 AWG
J3 Pin 2 (center)	Switch input - 4.5 to 24 VDC - .005 mAmp or greater = On = Stow
J3 Pin 3 (right)	Goes to Common Ground when Stow enabled – Vehicle LED Indicator 0 to 100 mAmp

- Use Vehicle rated LED Indicator for Stow Indicator. DC Rating from 5 to 24 VDC up to 100mAmp.
- When the Antenna is Stowed the LED Dash Indicator should be OFF.
- ACU-3 Antenna Controller must be ON for Remote Stow to function.
- If Antenna Controller is powered off the LED Indicator will be illuminated.

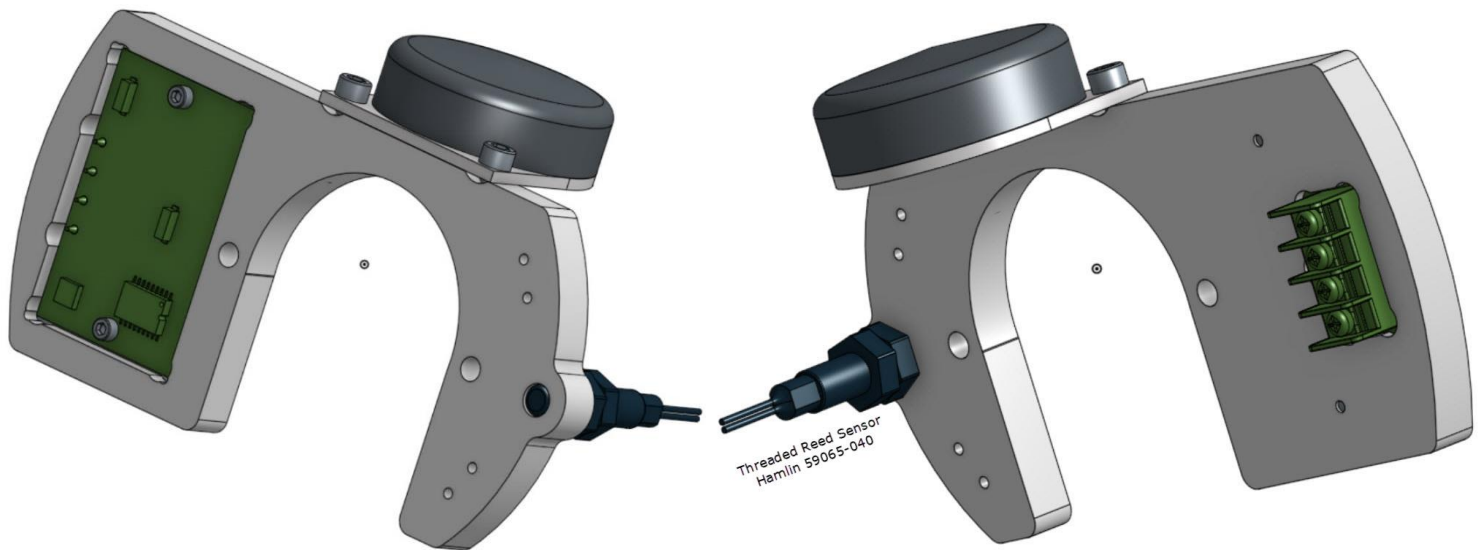
Vehicle operator is responsible to insure the antenna is properly stowed before operating the Vehicle!

Option 2 for Remote Vehicle Stow Indicator

When an external reed sensor is threaded into the Antenna (under Antenna Main Covers) GPS232Plus Module Assembly shown below a remote LED Indicator can be wired to this sensor. Using the specified sensor identified below when wired correctly and the Dish is STOWED the LED Indicator should be OFF. When the Dish is not Stowed the LED will illuminate. Using this option, the Antenna Controller does not need to be powered on to show the Antenna Status.

Reed Sensor (normally closed) Littlefuse PN:59065-040

<https://www.digikey.com/product-detail/en/littelfuse-inc/59065-040/59065-040-ND/269515>



- 1> Using Scotchlok UR (<https://www.digikey.com/product-detail/en/3m/UR-BX/UR20074-ND/30673>) splice 2 19 to 22 AWG wires to the wire ends of the Reed Sensor.
- 2> Wires need to be long enough to run to the vehicle Dash Panel.
- 3> Connect wire one to the Vehicle Ground (common).
- 4> Connect wire two to the negative (-) side of the LED indicator.
- 5> Connect the positive (+) side of the LED Indicator to an Ignition Power source that is only powered on when Ignition is ON.